

IN-HOME PLUMBING EMERGENCY PROGRAM AND INTERIOR ELECTRIC LINE PROTECTION PROGRAM FROM AMERICAN WATER RESOURCES OF FLORIDA

IN-HOME PLUMBING EMERGENCY PROGRAM*

COVERED:

- Broken water pipes hidden behind walls and ceilings
- Blocked or slow shower drains
- Clogged laundry drain line
- Leaking water supply line
- Burst water pipe joint
- Clogged sink
- Blocked or overflowing toilet
- Leaking water shut off valve
- Burst water pipe joint

NOT COVERED:

- Repairing any fixtures or appliances, such as toilets, faucets, showerheads, diverters, dispensers or supply tube lines
- Repairing any non-conforming drain line, such as a basement or storm drain system, connected to your drainage system
- Pre-existing conditions, including claims within first 30 days after enrollment
- Code upgrades
- Garbage disposal
- Fixtures (toilet components, faucet, water lines to appliances such as fridge, washing machine, etc.)

INTERIOR ELECTRIC LINE PROTECTION PROGRAM*

COVERED:

- Breaker panel/load centers
- Standard wall outlets/receptacles (including GFI)
- Standard wall switches and dimmers
- Electrical wiring
- Circuitry
- Fuse boxes and fuses
- Circuit breakers
- Connectors
- Boxes

NOT COVERED:

- Repairs to electrical lines consisting of knob and tube wiring or other nonstandard materials
- Repairing any openings made in walls, ceilings or surfaces inside your home for AWR's independent contractor to access your Interior Electric Line
- Pre-existing conditions, including claims within first 30 days after enrollment
- Code upgrades
- Secondary residences

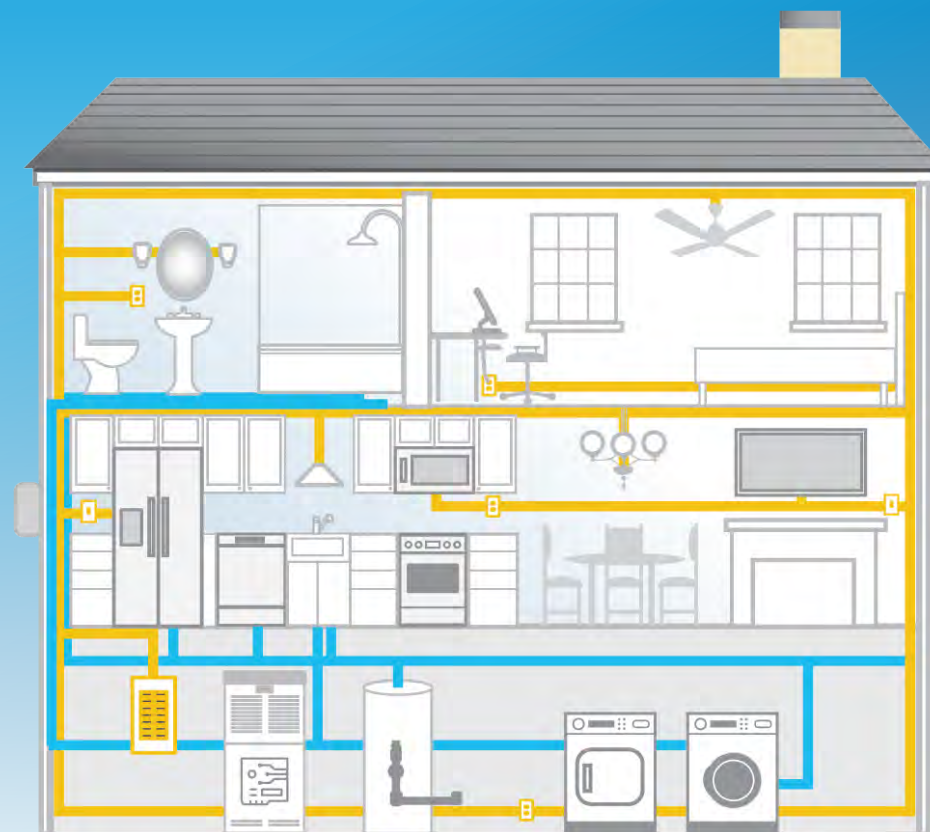


Diagram for illustrative purposes only. Homeowner responsibility may vary.